



**STEEL DRUM**

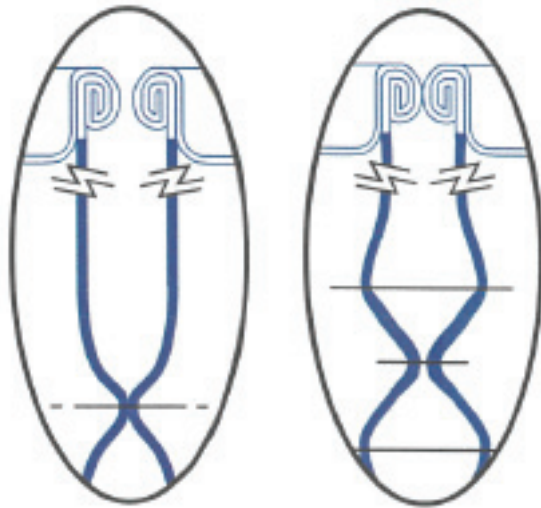
## **55 GALLON Export Tighthead**



**The Export Tighthead Steel Drum combines shipping efficiency with convenience to bring you a cost-effective container that will keep your product secure. The Export openhead conforms to ISO Standard Drum Type A specifications.**

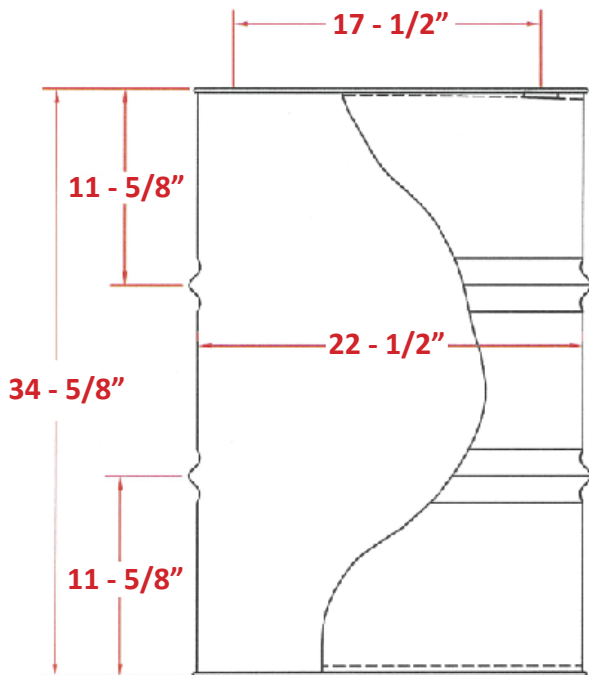
**Multiple radius rolling hoops result in increased vacuum resistance as well as improved stacking strength**



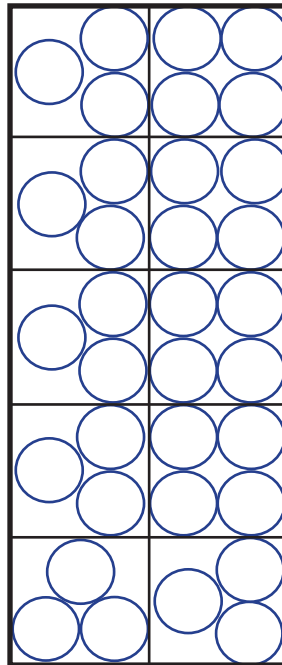


Allows drums to be loaded four (4) abreast in standard ISO intermodal containers

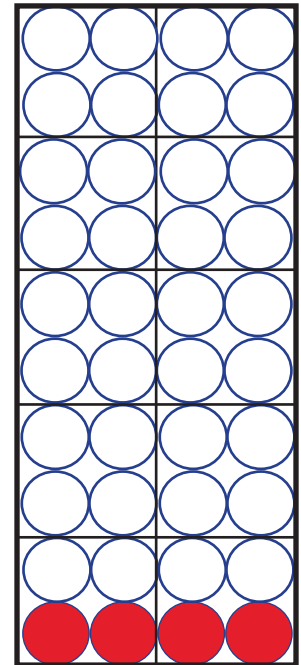
Full sized, partially inverted hoop lends to increased shock and abrasion resistance as well as improved stacking strength



68 Standard Drums



80 ISO Drums



**STANDARD SPECIFICATIONS:**

Capacity	55 US Gallons
Top Diameter	585mm
Inside Diameter	545mm
UN Rated	Group II for liquids